

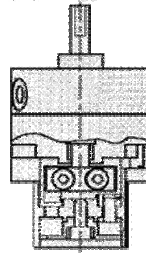
ELI

ROTARY CYLINDER

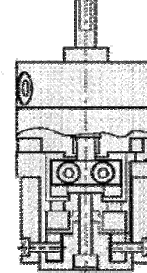


Internal structure

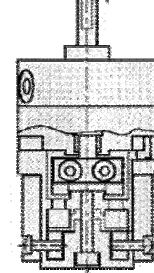
ELI-L



ELI-C



ELI-L-C (with L/C)

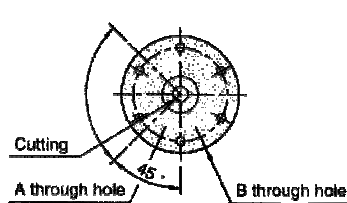


Specification

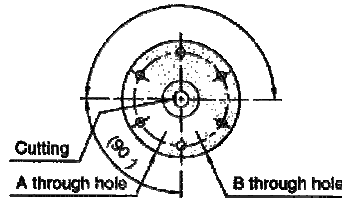
Item		ELI 10	ELI 15	ELI 20	ELI 30
Technical data					
Operation		Double acting			
Fluid		Air			
Torque	Nm	0.14	0.38	0.81	2.25
Pressure range	Bar	1.5 ~ 7			
Temperature range	°C	0 ~ 50			
Rod size	mm	4	5	6	8
Rotation angle	Degree	90 180 270			
Adjustable angle	Degree	+5 ~ -30			
Port size		M5×0.8			
Magnet		With magnet			



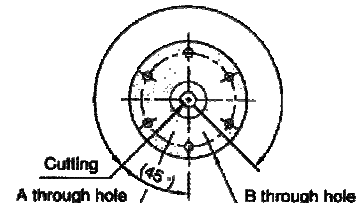
The rotation angle



● 90°



● 180°



● 270°



How to order

ELI	F	10	180	L	C	2
Model	Flange type	Torque	Rotation angle	Adjustable angle	Sensor holder	
		10 : 0.14Nm 15 : 0.38Nm 20 : 0.81Nm 30 : 2.25Nm	90- 90° 180- 180° 270- 270°			
Standard	F: Flange 0: Standard			L: Adjustable angle 0: Standard	0: No sensors C1: 1 Sensor C2: 2 sensors	



Sensors

See page X1-2

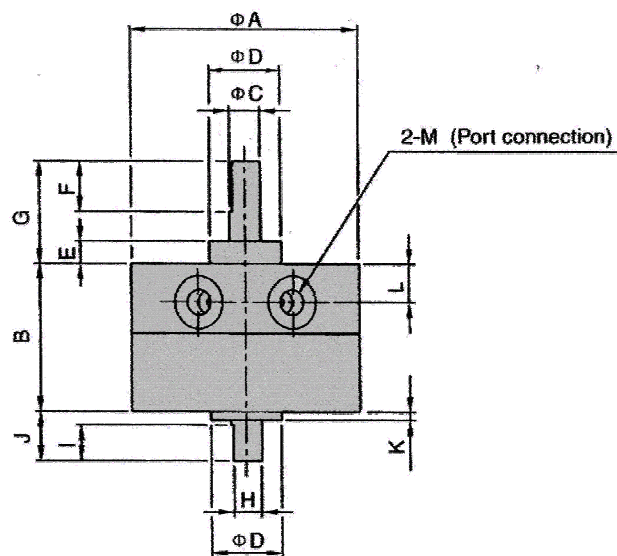
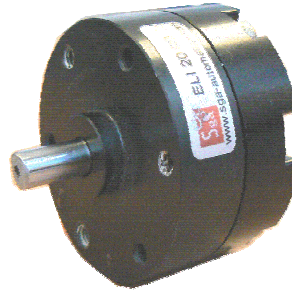
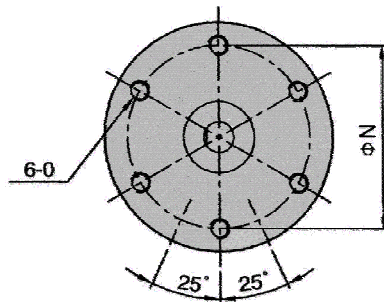
ELI

ROTARY CYLINDER



External dimensions

ELI 10, 15, 20, 30



Type	Code	A	B	C	D	E	F	G	H	I	J	K	L	M	N	O
ELI 10-90°	30	17	4	9	3	9	14	3,5	5	8	1	42	M5×0,8p	24	M3x0,5p	
ELI 10-180°																
ELI 10-270°																
ELI 15-90°	35	20	5	12	4	10	18	4,5	6	9	1,5	5	M5×0,8p	29	M3x0,5p	
ELI 15-180°																
ELI 15-270°																
ELI 20-90°	44	29,2	6	14	4,5	10	20	5,5	7	9,6	1,6	8,5	M5×0,8p	36	M4x0,7p	
ELI 20-180°																
ELI 20-270°																
ELI 30-90°	52	40	8	16	5	12	22	7,5	8	13	2	11	M5×0,8p	43	M5x0,8p	
ELI 30-180°																
ELI 30-270°																

* Dimensions are supplied for information only, they can be subjected to variations for technical improvements. We reserve us the right of bringing changes without previous notice.

Sensors

See page X1-2

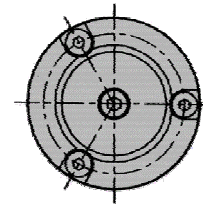
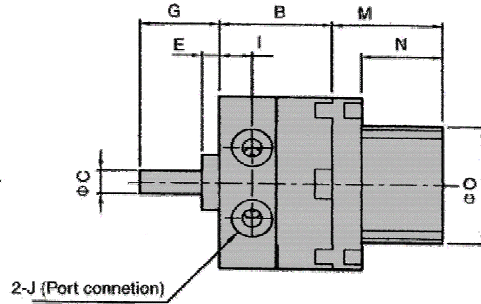
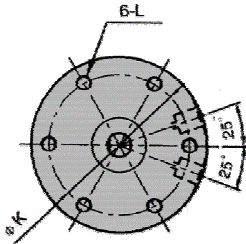
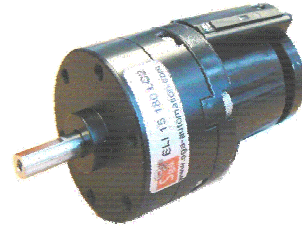
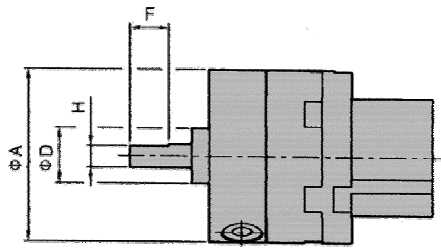
Page R 4 – 2

ELI ROTARY CYLINDER



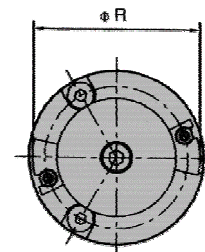
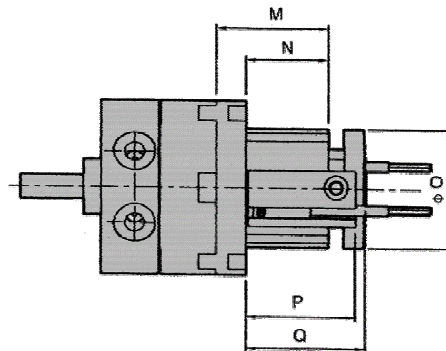
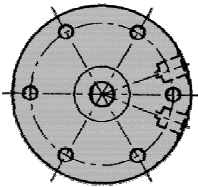
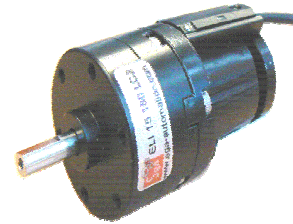
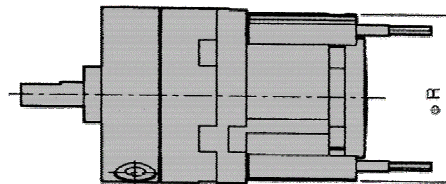
External dimensions

ELI 10, 15 L
Adjust angle implement



External dimensions

ELI 10, 15 C
Sensor holder



Code	A	B	C	D	E	F	G	H	I	J	K	L	M	N	O	P	Q	R
Type L, C																		
ELI 10-90°	30	17	4	9	3	9	14	3.5	4.2	M5×0.8	24	M3×0.5	24	18	18	23.3	24	29
ELI 10-180°																		
ELI 10-270°																		
ELI 15-90°	35	20.1	5	12	4	10	18	4.5	5	M5×0.8	29	M3×0.5	28	22	24	27.3	29.5	34
ELI 15-180°																		
ELI 15-270°																		

* Dimensions are supplied for information only, they can be subjected to variations for technical improvements. We reserve us the right of bringing changes without previous notice.



Sensors

See page X1-2

Page R 4 – 3

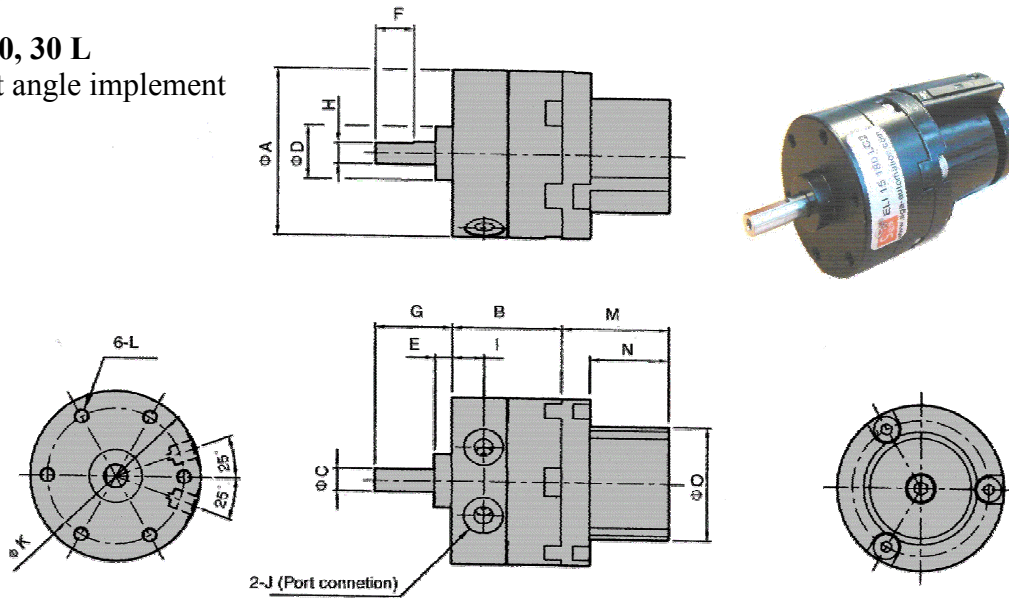
ELI

ROTARY CYLINDER



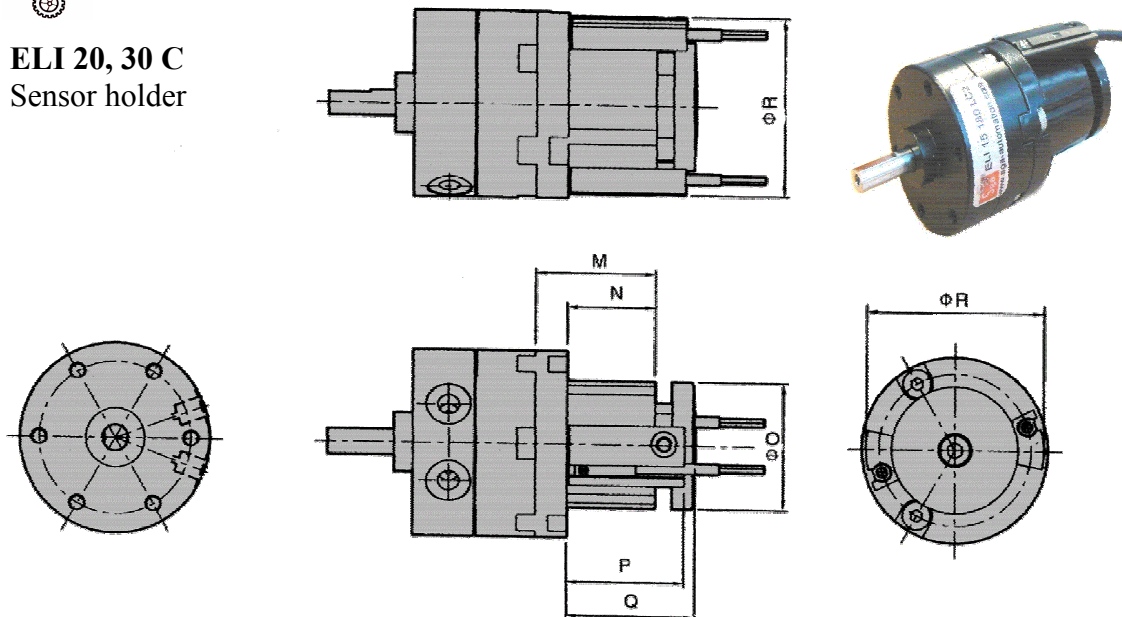
External dimensions

ELI 20, 30 L
Adjust angle implement



External dimensions

ELI 20, 30 C
Sensor holder



Code	A	B	C	D	E	F	G	H	I	J	K	L	M	N	O	P	Q	R
Type L, C																		
ELI 20-90°	44	29.1	6	14	4.5	10	20.3	5.5	8.5	M5×0.8	36	M4×0.7	28.5	21	30	28	30.5	42
ELI 20-180°																		
ELI 20-270°																		
ELI 30-90°	51	40	8	16	5	12	22	7.5	11	M5×0.8	43	M5×0.8	32.5	24	34	30.8	34	47
ELI 30-180°																		
ELI 30-270°																		

* Dimensions are supplied for information only, they can be subjected to variations for technical improvements. We reserve us the right of bringing changes without previous notice.



Sensors

See page X1-2

Page R 4 – 4

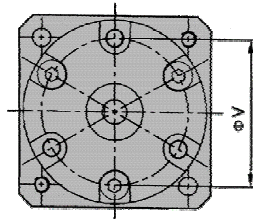
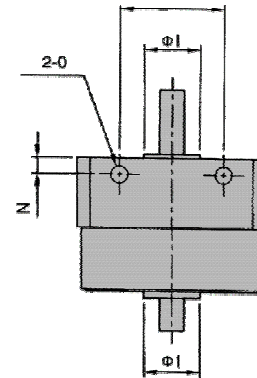
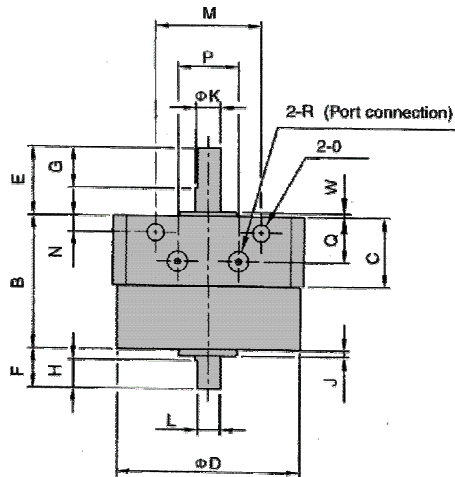
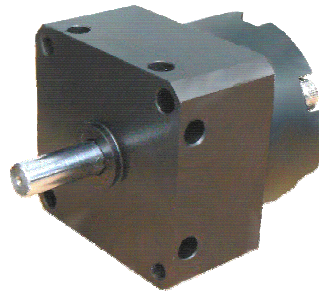
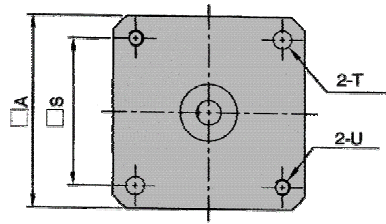
ELI

ROTARY CYLINDER



External dimensions

ELI F 10, 15, 20, 30



Type	Code	A	B	C	D	E	F	G	H	I	J	K	L	M	N	O	P	Q	R	S	T	U	V	W
ELI-F 10-90°																								
ELI-F 10-180°		31	22	13.3	30	14	8	9	5	9	1	4	3.5	17	3	3.5	9.5	9.2	M5×0.8p	25	3.5	M3×0.5p	24	1
ELI-F 10-270°																								
ELI-F 15-90°																								
ELI-F 15-180°		36	25.7	15.5	35	18	9	10	6	12	1,5	5	4.5	21	3	3.5	11	11	M5×0.8p	29	3.5	M3 0.5p	29	1.5
ELI-F 15-270°																								
ELI-F 20-90°																								
ELI-F 20-180°		44	33.6	19	44	20	10	10	7	14	1,6	6	5.5	26	4	4.2	15	13	M5×0.8p	36	4.5	M4×0.7p	36	1
ELI-F 20-270°																								
ELI-F 30-90°																								
ELI-F 30-180°		52	47.5	27.2	52	22	13	12	8	16	2	8	7.5	29	4.5	5.5	14	19	M5×0.8p	42	5.5	M5×0.8p	43	2
ELI-F 30-270°																								

* Dimensions are supplied for information only, they can be subjected to variations for technical improvements. We reserve us the right of bringing changes without previous notice.



Sensors

See page X1-2

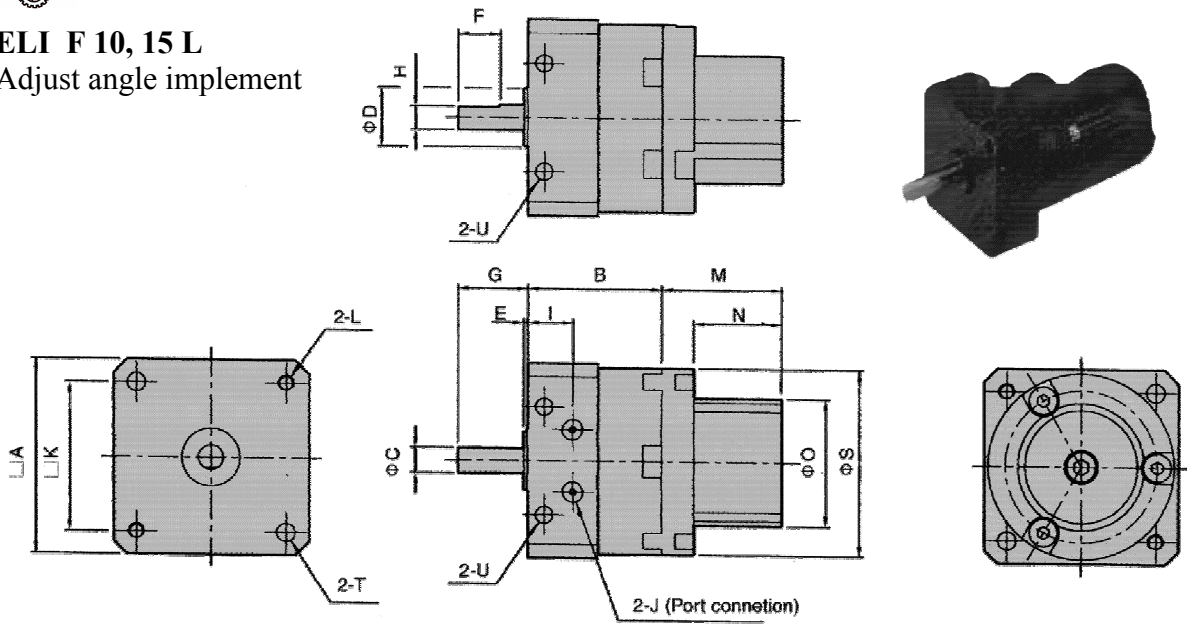
ELI

ROTARY CYLINDER



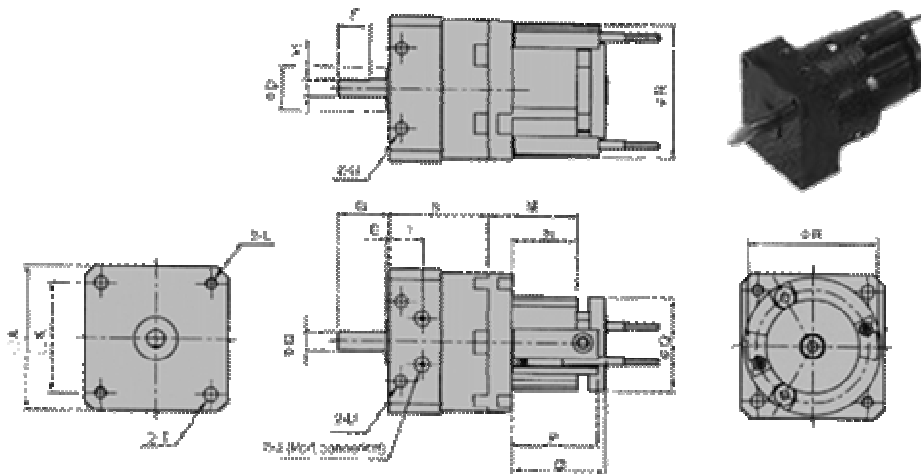
External dimensions

ELI F 10, 15 L
Adjust angle implement



External dimensions

ELI F 10, 15 C
Sensor holder



Code	A	B	C	D	E	F	G	H	I	J	K	L	M	N	O	P	Q	R	S	T	U
ELI 10-90°																					
ELI 10-180°	31	22	4	9	1	9	14	3.5	9.2	M5×0.8	25	M3×0.5	24	18	18	23.3	24	29	30	3.5	3.5
ELI 10-270°																					
ELI 15-90°																					
ELI 15-180°	36	25.7	5	12	1.5	10	18	4.5	10.5	M5×0.8	29	M3×0.5	28	22	24	27.3	29.5	34	35	3.5	3.5
ELI 15-270°																					

* Dimensions are supplied for information only, they can be subjected to variations for technical improvements. We reserve us the right of bringing changes without previous notice.



Sensors

See page X1-2

Page R 4 – 6

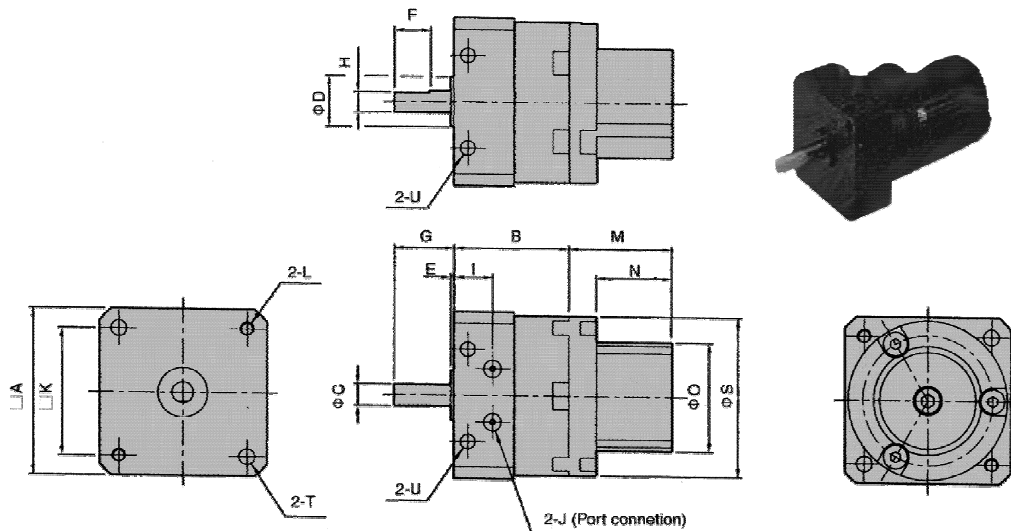
ELI

ROTARY CYLINDER



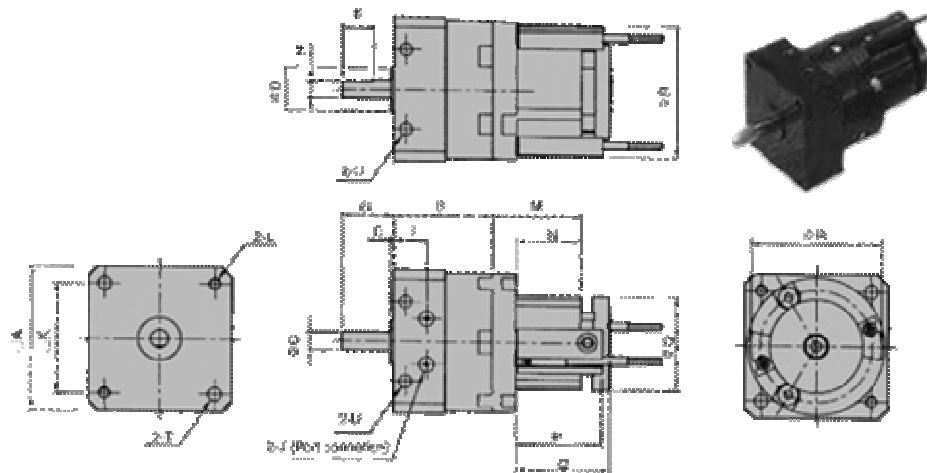
External dimensions

ELI F 20, 30 L



External dimensions

ELI F 20, 30 C Sensor holder



Type	Code	A	B	C	D	E	F	G	H	I	J	K	L	M	N	O	P	Q	R	S	T	U
ELI 20-90°																						
ELI 20-180°		44	33.6	6	14	1	10	20	5.5	13	M5×0.8	36	M4×0.7	28.5	21	30	28	30.5	42	44	4.5	4.2
ELI 20-270°																						
ELI 30-90°																						
ELI 30-180°		52	47.5	8	16	2	12	22	7.5	18.5	M5×0.8	42	M5×0.8	32.5	24	34	30.8	34	47	51	5.5	5.5
ELI 30-270°																						

* Dimensions are supplied for information only, they can be subjected to variations for technical improvements. We reserve us the right of bringing changes without previous notice.

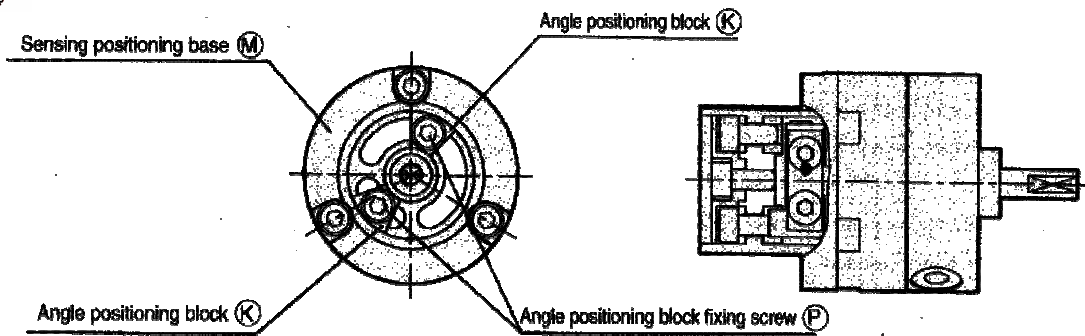


Sensors

See page X1-2

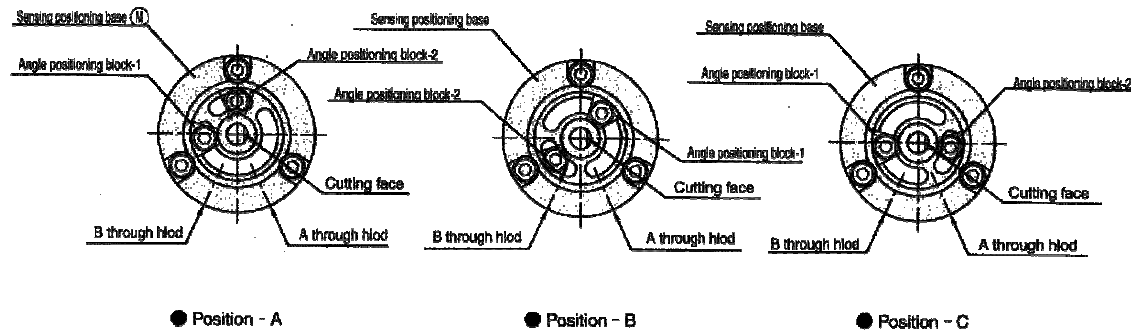
Page R 4 – 7

Adjust method of rotation angle



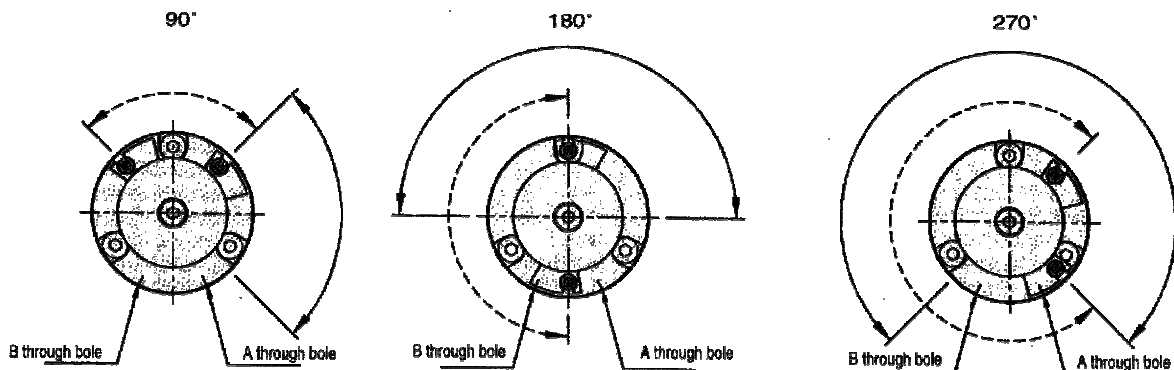
Method of adjustment:

1. Loosen the "Angle positioning block fixing screw P" to allow the "Angle positioning block K" sliding on the slot (Please never loosen completely).
2. Adjust the "sensing positioning base M" to desire setting position (A,B,C) and then tighten to secure.
3. Slide the "Sensing positioning base K" to desire angle and then tighten then fixing screw.
4. Match the rotating shaft in order to achieve more accurate positioning.



Position	Position - A			Position - B			Position - C		
Degree	90	180	270	90	180	270	90	180	270
ELI 10, 15, 20, 30	0° ~90°	130° ~180°	175° ~225°	30° ~90°	0° ~180°	0° ~250°	0° ~10°	105° ~180°	150° ~270°

Magnet position with adjustment range sensor



Description of adjustment:

1. As illustrated in above figure, the solid line area indicates rotation area of shaft cutting face, dotted line indicate rotation area of sensing magnet.
2. The rotation area of sensing magnet represents valid adjustment range of the sensor fixing holder. The sensor is effective within this range.