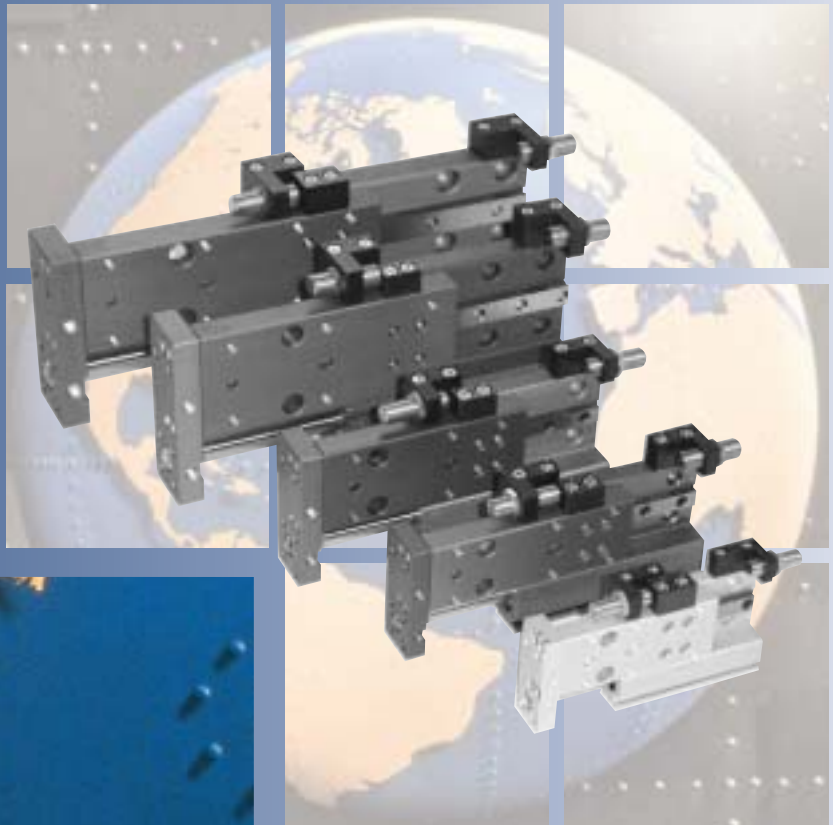
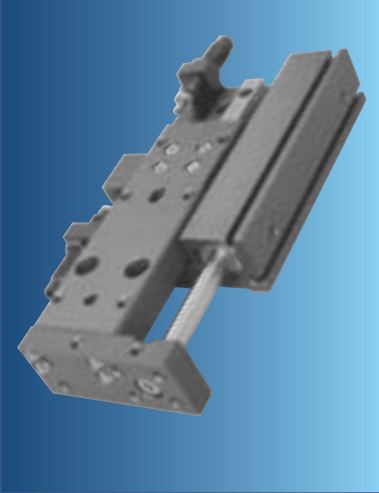




*Advanced Components
for Automation*

tecnomors



ATTUATORI LINEARI

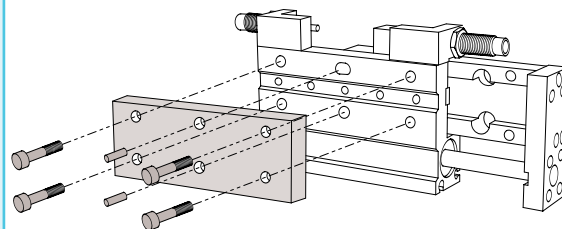
ALE

MINI SLIDES

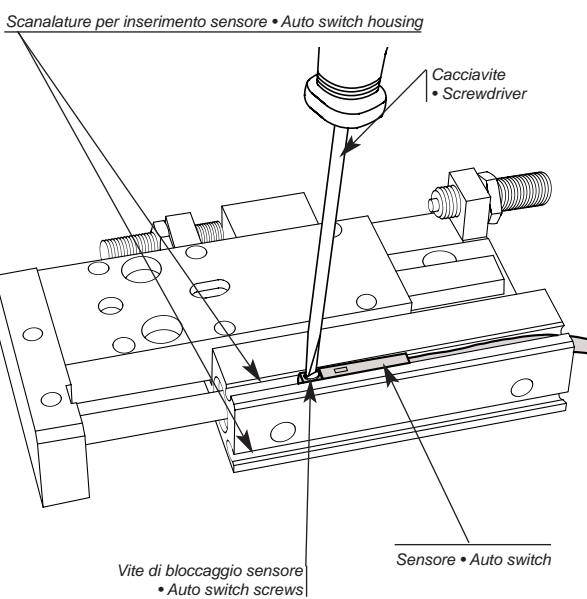
Guida lineare con pattino a ricircolo di sfere
• Rail guide and spheres' recirculation



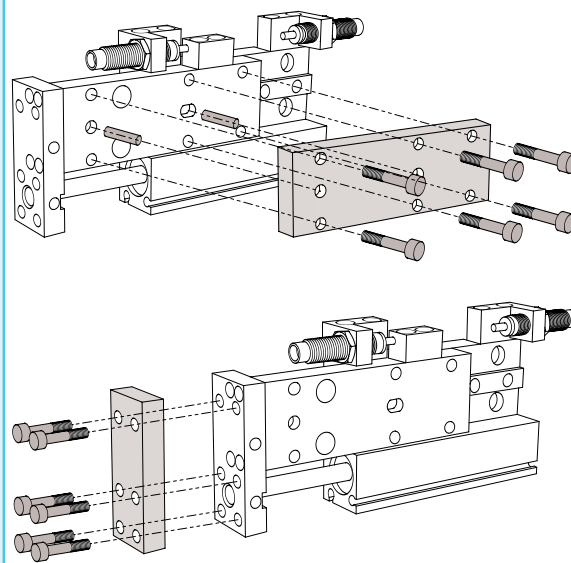
Schema di montaggio • Mounting



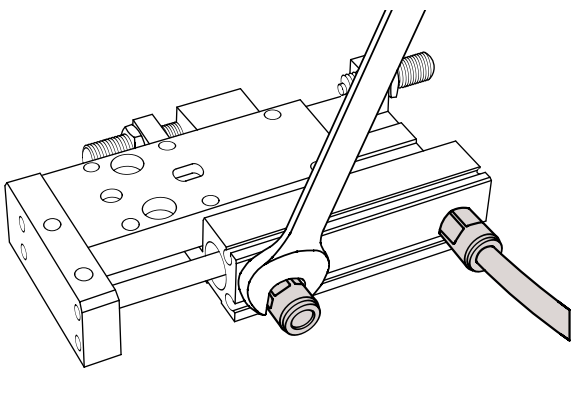
Schema di controllo • Control diagram



Fissaggio dispositivi
• Assembly of attachments

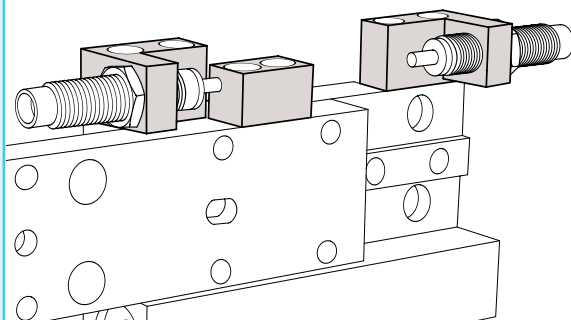


Alimentazione pneumatica • Pneumatic feed



Optional • Optional

Deceleratori oleodinamici esterni • External shock absorbers



Le slitte di questa serie "ALE" sono appositamente realizzate per ottenere traslazioni lineari in spazi ridotti.

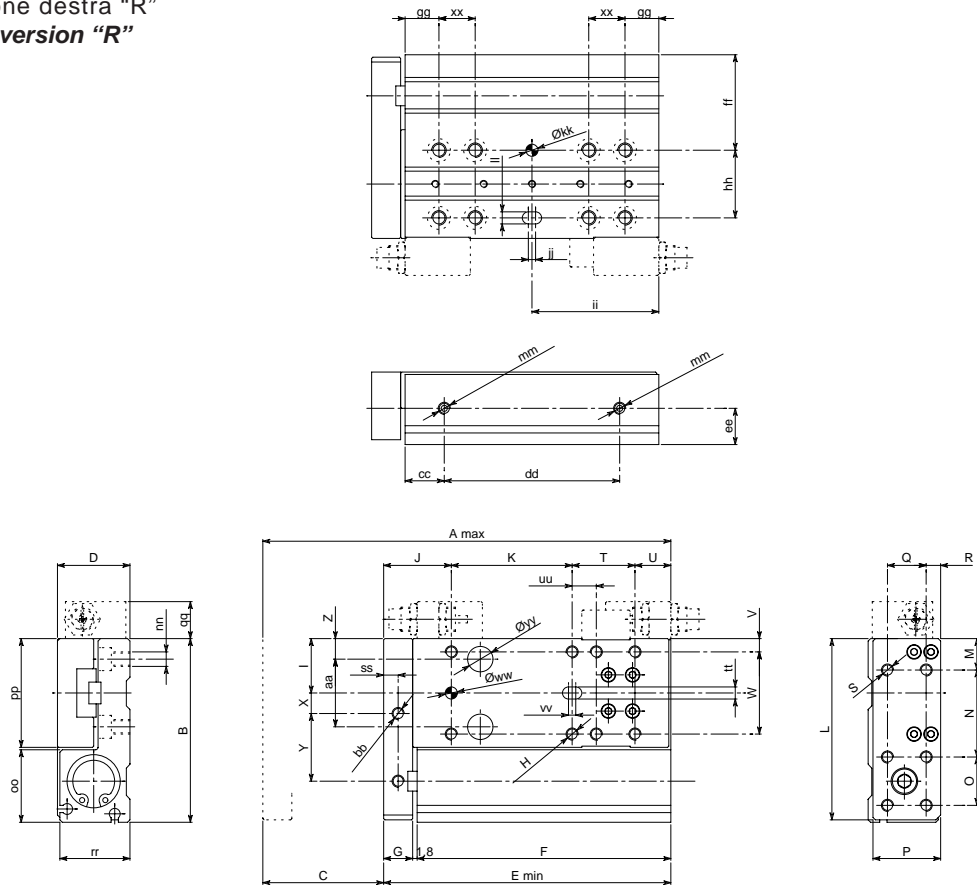
La loro particolare configurazione può offrire i seguenti vantaggi:

- particolarmente compatte e precise con l'abbinamento di una guida lineare con pattini a ricircolo di sfere ad un cilindro pneumatico a doppio effetto;
- cinque grandezze di prodotto con ampia gamma di corse disponibili (versioni destra e sinistra);
- peso contenuto in quanto sono realizzate quasi interamente in alluminio;
- predisposizione per l'introduzione di sensori di prossimità magnetici, senza aggiungere ulteriori ingombri esterni;
- possibilità di utilizzare deceleratori oleodinamici esterni per l'arresto della corsa.

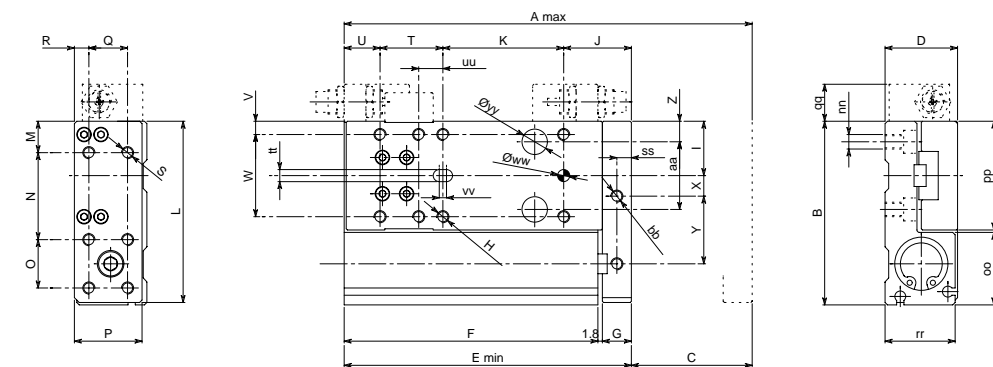
This range of slides ALE is realized to obtain linear translations in limited space. Their particular configuration offers the following advantages:

- *compact and precise with a combination of rail guide and spheres' recirculation to the double effect pneumatic cylinder;*
- *five dimensions with wide range of strokes available (left and right version);*
- *light-weight because they are almost completely realized in aluminum;*
- *grooves in the body allow the proximity switches introduction;*
- *possible usage of hydraulic shock absorbers for the stroke stoppage.*

Versione destra "R"
Right version "R"



Versione sinistra "L"
Left version "L"





Codice Code	A	C	E	F	K	T	dd	ii	uu	xx
ALE10-30	117.8	30	87.8	76	22	32	54	38	-	-
ALE10-50	157.8	50	107.8	96	32	42	74	48	-	-
ALE16-30	124.8	30	94.8	83	30	30	52	41.5	-	-
ALE16-50	164.8	50	114.8	103	50	30	72	51.5	-	-
ALE16-75	214.8	75	139.8	128	50	55	97	64	-	32
ALE16-100	264.8	100	164.8	153	50	80	122	76.5	50	40
ALE20-30	128.8	30	98.8	85	26	30	52.6	42.5	-	-
ALE20-50	168.8	50	118.8	105	50	26	72.6	52.5	-	-
ALE20-75	218.8	75	143.8	130	50	51	97.6	65	-	32
ALE20-100	268.8	100	168.8	155	50	76	122.6	77.5	46	36
ALE25-30	137.8	30	107.8	92	32	31	53	46	-	-
ALE25-50	177.8	50	127.8	112	50	33	73	56	-	-
ALE25-75	227.8	75	152.8	137	50	58	98	68.5	-	32
ALE25-100	277.8	100	177.8	162	50	83	123	81	50	32
ALE32-30	143.8	30	113.8	96	32	32	54.6	48	-	-
ALE32-50	183.8	50	133.8	116	52	32	74.6	58	-	-
ALE32-75	233.8	75	158.8	141	52	57	99.6	70.5	-	26
ALE32-100	283.8	100	183.8	166	52	82	124.6	83	52	36

Codice Code	B	D	G	H	I	J	L	M	N	O	P	Q	R	S
ALE 10 - ...	52	22	10	M4	16	23	51	10.5	36	-	21	10	6	M4
ALE 16 - ...	63	27	10	M5	18	23	62	10	30	16	25	13	6	M5
ALE 20 - ...	76	30	12	M5	22.5	28	75	13	36	20	28	16	6	M5
ALE 25 - ...	97	36	14	M5	29.5	30	96	18.5	48	20	34	18	8	M6
ALE 32 - ...	102	44	16	M6	29	31	101	20	45	26	42	22	10	M8

Codice Code	U	V	W	Y	X	Z	aa	bb	cc	ee	ff	gg	hh	jj
ALE 10 - ...	10.8	3	26	20	4.5	6	20	M4	11	10.5	26	14	20	3
ALE 16 - ...	11.8	4	28	24	6	7	22	M4	15.5	13.5	34	14	22	3
ALE 20 - ...	14.8	5.5	34	28	8.5	8.5	28	M5	16.2	15	39.5	14	28	3
ALE 25 - ...	14.8	8.5	42	40	7	9.5	40	M6	19.5	17.5	47.5	14	40	3
ALE 32 - ...	18.8	6	46	40	9	9	40	M8	20.7	21.5	53	15	40	3

Codice Code	kk	ll	mm	nn	oo	pp	qq	rr	ss	tt	vv	ww	yy
ALE 10 - ...	5 ^{H9}	5 ^{H9}	M5	M5	19	32	12	21	5	5 ^{H9}	3	5 ^{H9}	8.5
ALE 16 - ...	5 ^{H9}	5 ^{H9}	M5	M5	26	36	15.3	26	5	5 ^{H9}	3	5 ^{H9}	9
ALE 20 - ...	5 ^{H9}	5 ^{H9}	M5	M6	30	45	15.3	28	6	5 ^{H9}	3	5 ^{H9}	10.5
ALE 25 - ...	5 ^{H9}	5 ^{H9}	M5	M8	37	59	19.5	34	7	5 ^{H9}	3	5 ^{H9}	11.5
ALE 32 - ...	5 ^{H9}	5 ^{H9}	Rc1/8	M10	43	58	17	43	8	5 ^{H9}	3	5 ^{H9}	14

• Dimensioni in millimetri. Le dimensioni sono indicative e suscettibili di variazioni per migliori tecniche. Ci riserviamo di apportare modifiche senza preavviso
 • All dimensions are in millimeters, indicative and subject to variation for technical upgrading. We reserve the right to make alterations without prior notification

Dati tecnici Specifications

Codice Code	Corsa Stroke mm	Vol. dop. corsa Dual str. vol. cm ³	Spinta max Max. force a 6 bar-N	Spinta min. Min. force a 6 bar-N	Press. eserc. Work. Press. bar	Peso Weight g	Cod. art. destra Right art. code	Cod. art. sinistra Left art. code
ALE 10-30-R/L	30	3.9	46	30	1.5 ÷ 9	290	AL130RAA	AL130LAA
ALE 10-50-R/L	50	6.5				340	AL150RAB	AL150LAB
ALE 16-30-R/L	30	10.6				475	AL163RAC	AL163LAC
ALE 16-50-R/L	50	17.6	118	89	1.5 ÷ 9	550	AL165RAD	AL165LAD
ALE 16-75-R/L	75	26.5				645	AL167RAE	AL167LAE
ALE 16-100-R/L	100	35.2				740	AL161RAF	AL161LAF
ALE 20-30-R/L	30	16.5				625	AL230RAG	AL230LAG
ALE 20-50-R/L	50	27.5	185	138	1.5 ÷ 9	740	AL250RAH	AL250LAH
ALE 20-75-R/L	75	41.2				885	AL275RAI	AL275LAI
ALE 20-100-R/L	100	55				1025	AL210RAL	AL210LAL
ALE 25-30-R/L	30	26.1				1050	AL253RAM	AL253LAM
ALE 25-50-R/L	50	43.5	289	222	1 ÷ 9	1220	AL255RAN	AL255LAN
ALE 25-75-R/L	75	65.5				1430	AL257RAO	AL257LAO
ALE 25-100-R/L	100	87				1640	AL251RAP	AL251LAP
ALE 32-30-R/L	30	42.2				1430	AL323RAQ	AL323LAQ
ALE 32-50-R/L	50	70.5	473	355	1 ÷ 9	1650	AL325RAR	AL325LAR
ALE 32-75-R/L	75	105.5				1925	AL237RAS	AL237LAS
ALE 32-100-R/L	100	141				2200	AL231RAT	AL231LAT